

Capture Actual Space Utilization to Improve Data-Driven Decisions



Trimble Basis allows you to measure actual space utilization of your real estate portfolio. Our 'mixed fleet' approach to collecting utilization data allows occupiers to use whatever combination of sensors and indoor location technology makes the most sense for their varied workplaces.

Solution

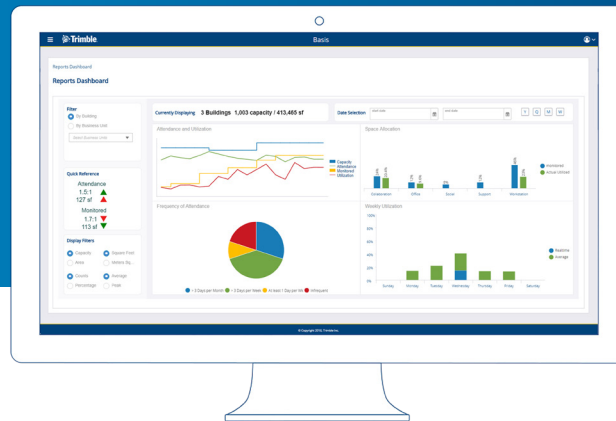
Trimble Basis

Space Utilization

UNDERSTANDING ACTUAL UTILIZATION

Integrated with Trimble's Space Management and Space Booking platforms, Trimble Basis leverages the work companies have already done to create accurate digital floorplans of their real estate portfolio. Basis scales to real estate portfolios of any size, whether two floors or two thousand. Stop guessing about utilization rates.

Finally, there's a way to understand actual utilization of specific buildings and your entire portfolio.



BASIS BENEFITS



Measure Actual Utilization

Relying on planned utilization alone is not enough; start measuring actual utilization



Keep Floors In Sync

Updated your floorplans in your Trimble space management application? No problem. Basis automatically keeps them in sync



Multiple Floors, Multiple Sensors

Trimble Basis is built to work with your entire real estate portfolio and whatever IoT sensors or indoor positioning technology you would like to use, via a robust API



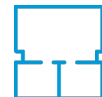
Avoid Floorplan Duplication

Reduce the challenges of disparate systems with centralized portfolio, building, workplace and lease information



Real-Time, All The Time

Snapshot manual utilization studies cannot provide a complete picture of the shifting workplace dynamics and cannot measure the impact of utilization initiatives. Basis can



Display Your Floorplans

LivePlan allows you to display actual utilization of your floorplans properly oriented on large screen monitors in your workplace making them easy to understand



Built For Any Scale

Built on the Trimble Cloud, we can scale to the size of your portfolio, whether a few floors to start with, a specific region, or the entire portfolio



Integrate Space Booking Data

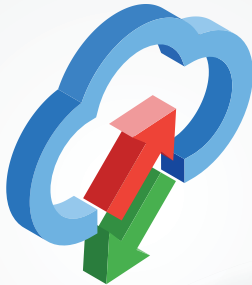
Trimble Basis can pull in room booking data from Manhattan Space Scheduling, where checking into and out of a booking indicates use

Realtime floorplan utilization, on display

LivePlan allows you to display real-time utilization data on any large screen monitor around your workplace. Not a north facing wall? Not a problem. LivePlan can be rotated to match the orientation it is being displayed and its dynamic labels will properly orient to your direction.



'Example utilization data provided by Current, powered by GE'



Keep your floorplans in sync

Trimble space management clients put a lot of work into making sure they have accurate floorplans of their portfolio.

Basis leverages this work to keep your space management system as your floorplan system of record. Update your floorplan in space management and your updates are automatically synced to Basis.

Multiple data sources... Our API has you covered

All buildings are unique, so naturally they won't all use the same sensor technology. Trimble Basis is built with a 'mixed fleet' approach in mind when it comes to sensor data sources. We can help you integrate them all using the Basis API.



Space Planner

Space Managers can focus their attention optimizing the workplace and not worrying about keeping floorplan drawings and data in sync between many different systems.



Real Estate Director

Real Estate Directors can have confidence in the decisions they are making because they are based on what is actually happening within the workplace and not presumptions.



End User

End users can easily orient themselves within the workplace and understand what spaces are available when their day does not go quite as planned.



About Trimble Real Estate & Workplace Solutions

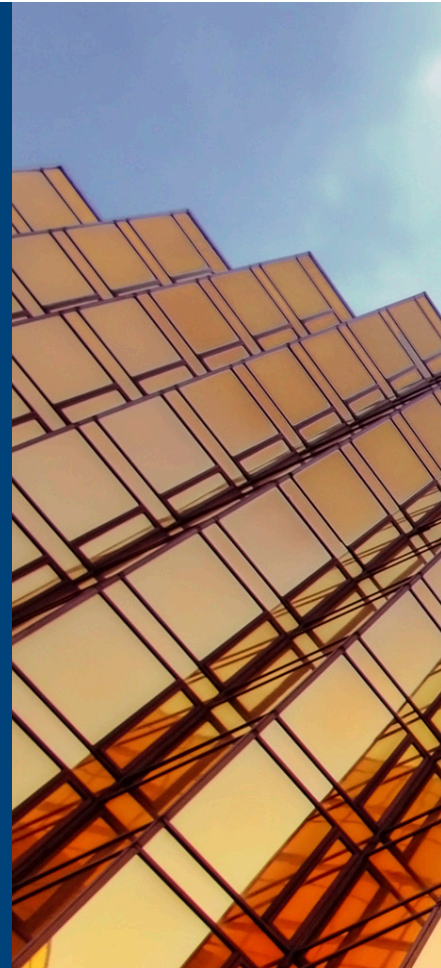
As a global specialist with over 34 years' experience, we help customers transform the way they plan, manage, and optimize their real estate portfolios, buildings and workplaces through cloud-based CAFM & IWMS software.

Whether you are an occupier, investor, owner or service provider, looking to manage a single building or an international portfolio, our highly scalable CenterStone and Space Scheduling products cover both space and facility management allowing users rapid deployment options. While Manhattan, our flagship IWMS product, is a proven real estate, facilities and financial management platform, comprised of integrated modules - strengthened by unique system configuration, secure workflow support, and decision support reporting.

Our global Professional Services team has domain, technology and product knowledge that is combined with a tailored implementation methodology, refined from hundreds of implementations.

Industry analysts have consistently positioned us as a 'Leader'. Our ISO 27001 certification confirms that security best practices are in place throughout the entire division. And our leading cloud based delivery service provides clients with an affordable and secure way to access our technologies and industry expertise.

With offices all over the world, Trimble Real Estate & Workplace employs dedicated industry trained professionals and supports over 450 clients in over 140 countries.



CONTACT US

If you would like to learn more about our technology solutions, please contact us via realestate.trimble.com or call us on:

Americas: **+1 800 850 2660**

Europe: **+44 20 7269 8500**

Australia: **+61 2 8059 6700**

Email: realestate_info@trimble.com