

# Improve Space Utilization and Building Efficiency with Trimble CAFM Software



Against a backdrop of new work styles, new work patterns and greater workplace agility, space planners and facility managers are under constant pressure to reduce the total cost of occupancy. They're expected to deliver greater building efficiency and better utilization of workspaces. **Trimble CenterStone** is a powerful CAFM solution for streamlining the tactical work of managing key space and facility building processes.

## Solution

### CenterStone

Computer Aided Facility Management (CAFM)

# MANAGE THE COMPLETE LIFECYCLE OF WORKPLACE BUILDING PROCESSES

CenterStone is a feature-rich CAFM solution specifically designed to help organizations streamline the tactical work of managing the complete lifecycle of workplace building processes, including space, moves, assets, work orders and operations. CenterStone is perfect for organizations of all sizes and can be tailored for companies looking to manage a single building, to those with millions of square feet that require an enterprise-wide facility management solution.

## CENTERSTONE MODULES



### Space Planning

Visual, interactive and configurable way to format, update and report on your space information.



### Maintenance Management

Manage your service requests, work order processing and preventive/predictive maintenance



### Space Utilization

Integration with Trimble Basis to capture actual utilization and enable data-driven decisions to optimize your real estate portfolio



### Asset Management

Manage all your workplace assets such as furniture, HVAC, emergency and IT equipment



### Moves Management

Seamlessly plan, manage and execute both your single-person and large-scale, project based moves



### Lease Tracking

Accurately track and manage all aspects of your leased property portfolio.



### Space Scheduling

Streamline the reservation and management of your meeting rooms, workspaces and associated services



### Dashboards & Reporting

Easy-to-use dashboards and business intelligence with over 100 pre-formatted and ad hoc reporting capabilities



### Space Planner

Space Planners can optimize space to meet the needs of the organization, effectively perform moves and allocate space back to the organization. Space Planners can also use historic data to build future scenarios that include a mix of traditional and flexible workplace styles.



### Facility Manager

Facility Managers can schedule, perform and review all reactive, predictive and preventative maintenance for their facilities. Facility Managers can also manage the lifecycle of their assets from acquisition to maintenance history to disposition.

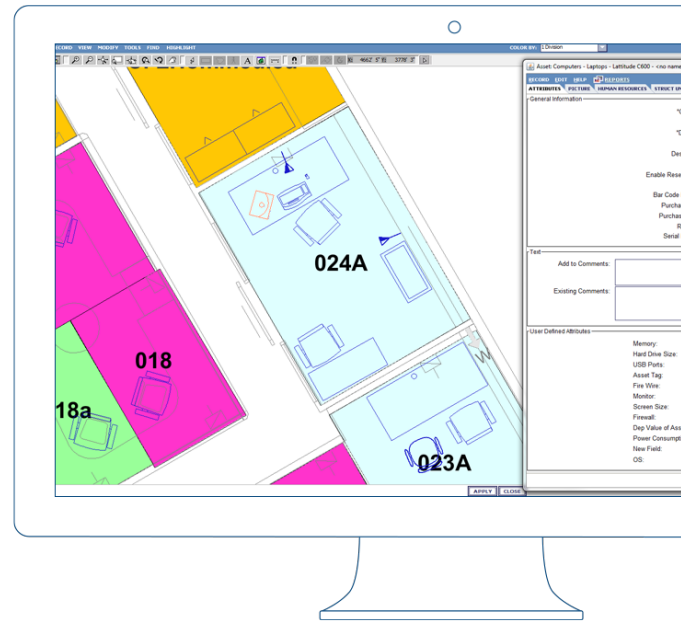


### End User

Employees can interact with live maps of the workplace, finding rooms and fellow employees. Employees can also submit a range of workplace requests such as reporting a maintenance incident or requesting a move.

## Measure space efficiency and identify underutilized space

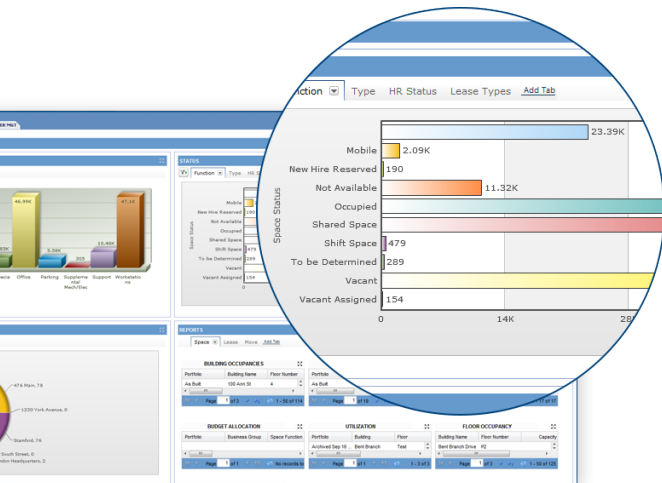
CenterStone offers a visual, interactive and configurable way to format, update and report on your space information. It allows users to measure space efficiency and quickly identify vacant and underutilized space that can be used for improving real-time utilization, consolidation opportunities or on-boarding of new employees.



## Capture and analyse the data you need to make the right decision

CenterStone's out-of-the box reporting tools let you capture and analyze the data you need to make the right decisions and create a positive impact on your organization's bottom line.

CenterStone reporting provides real time decision support by making critical workplace information available for review in the style and format that you need in order to make better business decisions. Integration with Manhattan Analytics can give you a comprehensive view of your utilization, capacity, square footage, lease expirations and total cost of operations across your real estate and facilities portfolio.



## Take your space management to the next level

Due to the intricacies of managing and fully utilizing an ever-increasing amount of flexible workspace, organizations are increasingly turning to integrated space management technology.

Combine CenterStone space management with Trimble's Space Scheduling room and desk booking solution and Basis utilization platform to access up-to-date utilization information. Key space metrics flow back and forth automatically so that space planners and managers have up-to-date information about occupancy and utilization.







[CenterStone] has provided us with the right tool to increase our utilization of space across the portfolio. Since collaboration is critical in today's global work environment, we needed a tool that was flexible enough for us to deploy internationally, and was visual and easy to use by our consultants no matter wherever their projects are taking them."

- Leading Global Management Consulting & Professional Services Company

## CENTERSTONE BENEFITS



### Support For Multiple Types Of Workspaces

Ability to manage traditional, modern office and hybrid workspace as well as manage the transition to new workspace styles



### Visualization

Dashboards provide easy-to-understand, role-based visuals of Key Performance Indicators (KPI's)



### Out-Of-The-Box Cloud Solution

Powerful 'out-of-the-box' capabilities with fast and easy user configuration, greatly reduces implementation time and increases return on investment



### Centralized Management

Access and analyze workplace data from disparate sources in one location, allowing outsourced partners to work seamlessly on your facilities projects



### Maximize Moves & Space Optimizations

Full end-to-end flexible workflows that manage your facilities processes from beginning to completion



### Streamline Processes

Business process automation accomplished via a proven workflow engine to define process improvements



### Mobile Apps

View interactive floor plans, update space occupancy, book workspace and manage work orders on the go



### Drive Better Decisions

Access more comprehensive utilization data by combining CenterStone with Trimble's Space Scheduling & Basis

## CONTACT US

We help customers transform the way they plan, manage and optimize their real estate and workplace. If you would like to learn more about our technology solutions, please contact us via [realestate.trimble.com](https://realestate.trimble.com) or call us on:

Americas **+1 800 850 2660**

Europe **+44 20 7269 8500**

Australia **+61 2 8059 6700**