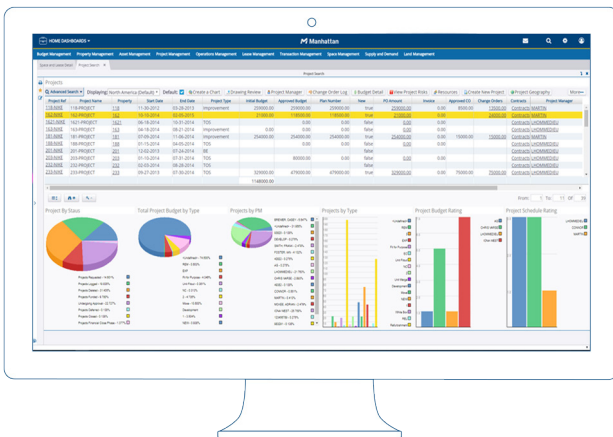




# Plan and deliver projects efficiently to meet expectations of delivery time, cost and quality



Trimble's Manhattan **Project Management** module provides deep functionality for all phases of project management: initiation, design, procurement, execution, commissioning (or testing and verification) and closeout.



- ▶ Centralized project information for all FM and RE work in one location to manage scope, schedule and budget information
- ▶ Simplified project setup through the use of templates, including those designed for standard tasks, resources and budgets
- ▶ Streamlined management of purchase orders and invoices within budget constraints
- ▶ Improved visibility of performance management at all levels, including geographic and organizational hierarchy

## How can Trimble Manhattan help you?

Book a demo or contact us via our website



Tight control over capital expenditure is a top priority. Organizations need a way to gather and deliver all of the accurate intelligence and comprehensive insights that are needed for every project phase—from planning and design to procurement, execution, commissioning, and operations and maintenance.

Trimble's Manhattan **Project Management** module provides centralized project information—and is fully integrated with Manhattan's Workflow, Financial Management, Space Management, and Facility Management capabilities. With Manhattan you can capture, process, analyze and report all of the key metrics that will help you decide which projects should be given funding priority.

### **Record and manage data across the portfolio**

Manhattan provides functional areas designed to record and manage data across the portfolio. The available reporting tools can then be used to present this data as useful information aggregated from each module to provide holistic visibility of real estate performance. This information can be used to help plan strategic and operational management of the portfolio for which the Project Management module can be used to execute these plans.

### **Manage capital project planning**

Capital planning for wider scale strategic projects and single project capital planning is supported within the Project Management module. This is achieved through the use of both Programmes and Project functions; Programmes can be related to multiple smaller projects whereby tasks and budget can be broken down, an example being a Capital Investment Plan to improve the condition of real estate - each project could relate to a type of work e.g. roof replacement or a particular site. The project records are flexible to ensure they can be applied to multiple project types/purposes.

### **Streamline project progress with milestones and tasks**

The project record within Manhattan will contain all details relating to the project and as such, there is a single source of information for project stakeholders to access.

The record is broken down into the key elements of a project. This includes the Milestones and Tasks functions; the milestones provide a high level snapshot of the progress of a project, designed for a more executive view.

The tasks (sub-tasks, sub-sub-tasks) provide granular detail and show the dependencies of tasks to ensure the critical path can be managed.

Dates can be managed manually or automatically i.e. setting a

start or end point and having the dates populate automatically. Once set, these dates can be frozen unless otherwise agreed through change request to ensure project control.

### **Budget approval and tracking**

Budgets can be created and tied to CSI/task codes either built up from previous financial templates or similar projects. Budgets can be approved using client specific authorisation which can then in turn aggregate up to approve the wider capital programme. The funding approval process captures the necessary evidence of commissioning to ensure the initial start-up of a project can move through the required stages.

### **View, share, and access 3D BIM information**

Integration with Trimble Connect allows users to view, share, and access 3D BIM information. You can also link with Microsoft HoloLens via Trimble Connect to view how the proposed new build could look when the project has been completed—right down to the mechanical, electrical and plumbing layout.



#### **The Manhattan Solution**

- ▶ Application Platform
- ▶ Financial Management
- ▶ Transaction Management
- ▶ Lease Management
- ▶ Compliance Management
- ▶ **Project Management**
- ▶ Space Management
- ▶ Space Utilization
- ▶ Room & Desk Booking
- ▶ Facility Management
- ▶ Energy & Sustainability