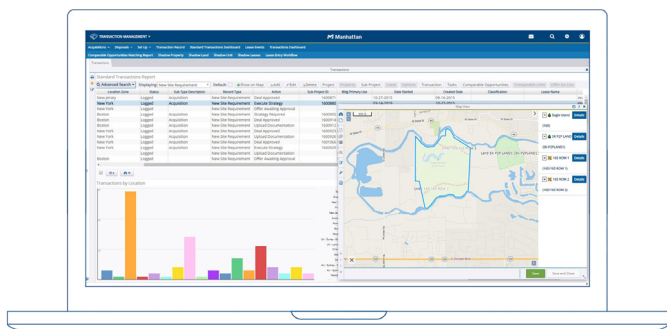




# Streamline the way you evaluate, acquire and dispose of your real estate



Trimble's ManhattanONE **Transaction Management** software enables real estate professionals to help manage the complex processes associated with both the acquisition and disposition of property.



- ▶ Improves comparative analysis used in decision support
- ▶ Full workflow support enables standardized processes to be followed
- ▶ Streamlines the transition from “what if” scenario to “actual”
- ▶ Historical records are maintained for later analysis
- ▶ Improves coordination between brokers and portfolio managers
- ▶ Provides greater transparency into the overall real estate lifecycle

## How can Trimble ManhattanONE help you?

Book a demo or contact us via our website



[realestate.trimble.com](http://realestate.trimble.com)

With real estate prices continuing to rise, many businesses are changing the way they evaluate, acquire and dispose of their real estate. As a result, real estate professionals require a system that can help evaluate multiple scenarios and transactions that would best align with their corporate and portfolio strategy before securing and negotiating a final transaction.

Trimble's ManhattanONE **Transaction Management** software streamlines the processes involved — and provides the core information and processing required to enable you to take a more systematic and analytical approach to acquisitions and disposals.

### **Support each stage of the evaluation and approval process**

ManhattanONE provides the functionality needed to help support each stage of the evaluation and approval process. With ManhattanONE, you can streamline the way real estate strategy is executed through evaluation of:

- ▶ comparable sites and lease,
- ▶ acquisition of new sites
- ▶ and disposing of surplus real estate

### **Streamline transactions admin**

Configure how the Transactions module works inline with business policy; add and update matching parameters to ensure new site and lease options can be effectively shortlisted, and approved.

### **Track and manage disposals**

Follow step by step process to ensure lease expiries and sales can be tracked and managed through appropriate approval chains.

### **Create shadow records**

Model potential properties, units and leases by creating them as shadow records; forecast future spend to see the impact of the lease.

### **Manage transaction type setup**

Classify the purpose of each transaction inline with property strategy.

### **Integrated document management**

Using ManhattanONE's Transaction Management software in conjunction with ManhattanONE document management, ManhattanONE can support approval processes through various stages and levels of approval whilst also capturing and storing all related documentation.



#### **The Manhattan Suite**

- ▶ System Platform
- ▶ Financial Management
- ▶ **Transaction Management**
- ▶ Lease Management
- ▶ Compliance Management
- ▶ Project Management
- ▶ Space Management
- ▶ Space Utilization
- ▶ Space Scheduling
- ▶ Facility Management
- ▶ Energy & Sustainability